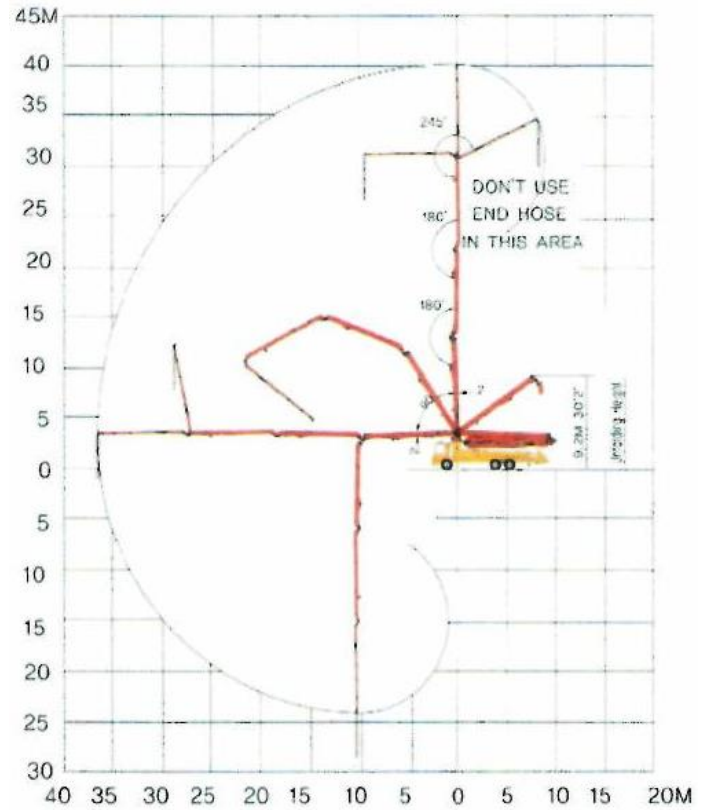
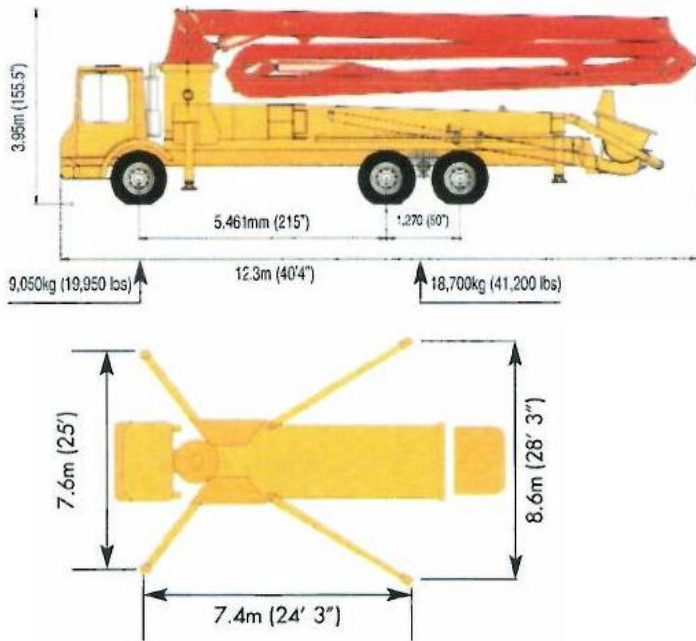




ALLIANCE 40 METER ROLL-FOLD



BOOM SPECIFICATIONS

Vertical Reach	40.2m (131'9")
Horizontal Reach	36.2m (118'9")
Unfolding Height	9.2m (30'2")
1st Section Length	9.4m (30'8")
2nd Section Length	8.6m (28'2")
3rd Section Length	9.0m (29'6")
4th Section Length	9.2m (30'2")
Outrigger	X-Style
Front Spread	7.6m (25')
Rear Spread	8.6m (28'3")

GENERAL SPECIFICATIONS

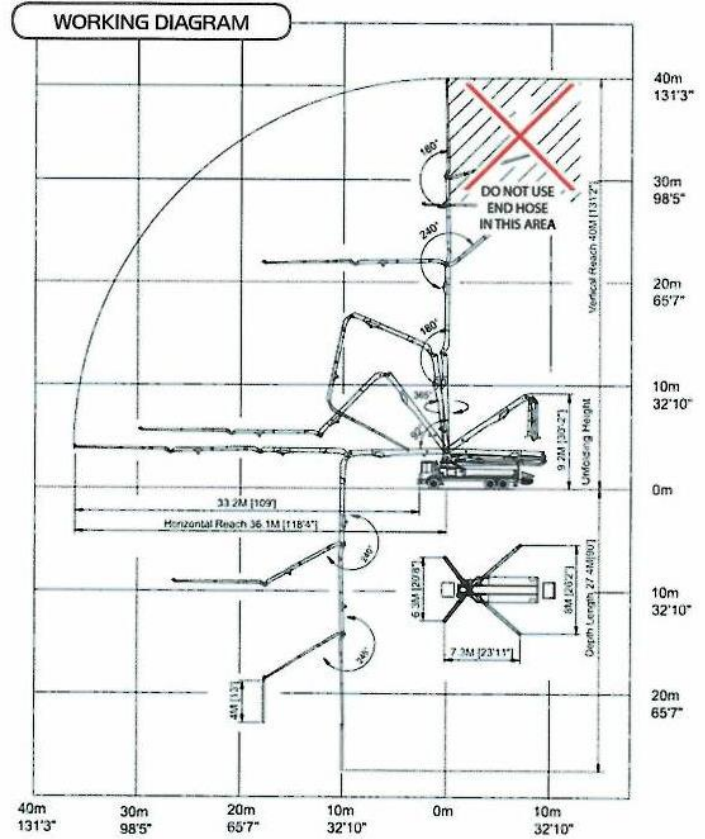
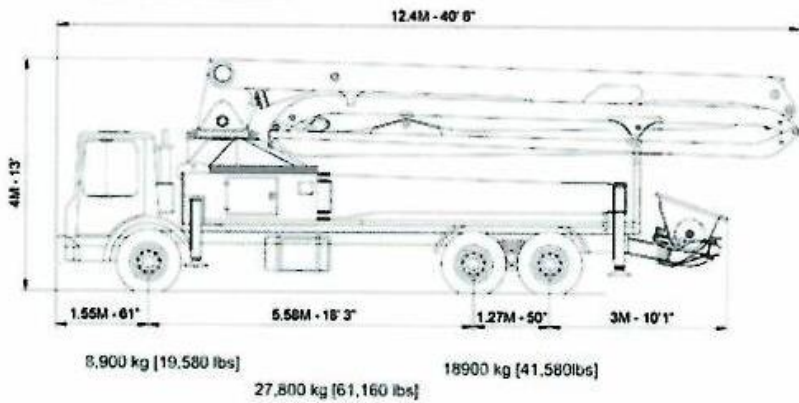
Pipe Size (ID)	125mm (5")
Boom Control Valve	Proportional
Radio Remote:	Consult Factory
Vibrator	Standard
Water Pump	Hydraulic Power 20 bar (290 psi)
Water Tank	600L (158 G)

PUMP SPECIFICATIONS

Output	Rod Side	164 m ³ /h (215 yd ³ /h)
	Piston Side	102 m ³ /h (133 yd ³ /h)
Pressure	Rod Side	72 bar (1044 psi)
	Piston Side	115 bar (1668 psi)
Concrete Cylinder Diameter	230mm (9")	
Concrete Cylinder Type	Hard Chromed	
Stroke Length	2100mm (83")	
S-Tube Size	8" x 7"	
Main Oil Pump	Rexroth Hydromatic A11VSO260	
Hydraulic System Pressure	350 bar (5076 psi)	
Lube System (Hopper)	Automatic	
Switching System	Hydraulic	
Hopper Capacity	Easy Clean 600L (158G)	
No. Strokes/Min	31	



CONCORD 40 METER ROLL-FOLD



BOOM SPECIFICATIONS	
Vertical Reach	40m (131'2")
Horizontal Reach	36.1m (118'4")
Unfolding Height	9.2m (30'2")
1st Section Length	9.5m (31'2")
2nd Section Length	8.6m (28'3")
3rd Section Length	8.7m (28'7")
4th Section Length	9.5m (31'2")
Outrigger	X-Style
Front Spread	6.3m (20'8")
Rear Spread	8.0m (26'2")
Max Outrigger Weight	23,000Kg (50,706lbs)

GENERAL SPECIFICATIONS	
Pipe Size (ID)	125mm (5")
Boom Control Valve	Proportional
Radio Remote:	Consult Factory
Vibrator	Standard
Water Pump	Hydraulic Power 20 bar (290 psi)
Water Tank	600L (158 G)

PUMP SPECIFICATIONS	
Maximum Output	170 m ³ /h (224 yd ³ /h)
Pressure	Rod Side 72 bar (1044 psi)
	Piston Side 114 bar (1600 psi)
Concrete Cylinder Diameter	230mm (9")
Concrete Cylinder Type	Hard Chromed
Stroke Length	2100mm (83")
S-Tube Size	9" x 7"
Main Oil Pump	Rexroth Hydromatic A11VSO260
Hydraulic System Pressure	350 bar (5076 psi)
Lube System (Hopper)	Automatic
Switching System	Hydraulic
Hopper Capacity	600L (158G)
No. Strokes/Min	30